



OAKFIELD



Santa Cruz Drive, Eastbourne
£1,250 Per Calendar Month



Santa Cruz Drive, Eastbourne

This beautifully presented two bedroom flat on Santa Cruz Drive, Eastbourne, offers bright and comfortable living in a popular residential area.

The property includes a spacious lounge filled with natural light also offering ample space for dining and access to balcony, a kitchen with ample storage, two generously sized bedrooms with a ensuite shower room to the master and additional family bathroom, all decorated in neutral tones to suit a variety of tastes.

With allocated parking and access to well-kept communal areas, the flat provides both convenience and comfort. Santa Cruz Drive is part of the sought-after Sovereign Harbour area, known for its attractive waterside setting, modern amenities and relaxed lifestyle. Just a short walk away you'll find the harbour's waterfront cafes, restaurants and shops, along with a large supermarket for everyday convenience.

Perfect for professional tenants or a small family, this property combines modern living with a great location.

Please note:
An annual household income of £37,500 per annum is required





Living/Dining Room

20'7 x 15'0 (6.27m x 4.57m)

Kitchen

13'0 x 7'2 (3.96m x 2.18m)

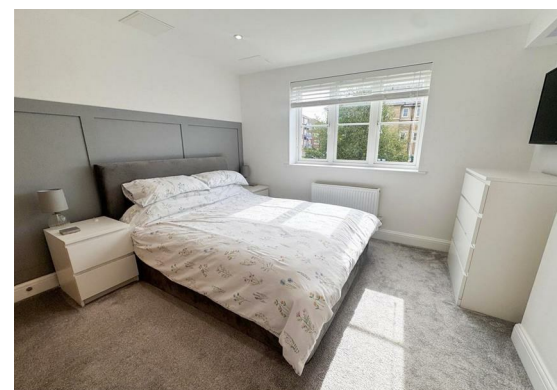
Bedroom 1

12'6 x 1'7 (3.81m x 0.48m)

Bedroom 2

10'11 x 9'9 (3.33m x 2.97m)

Council Tax Band C - £2051.34 per annum



Floor Plan

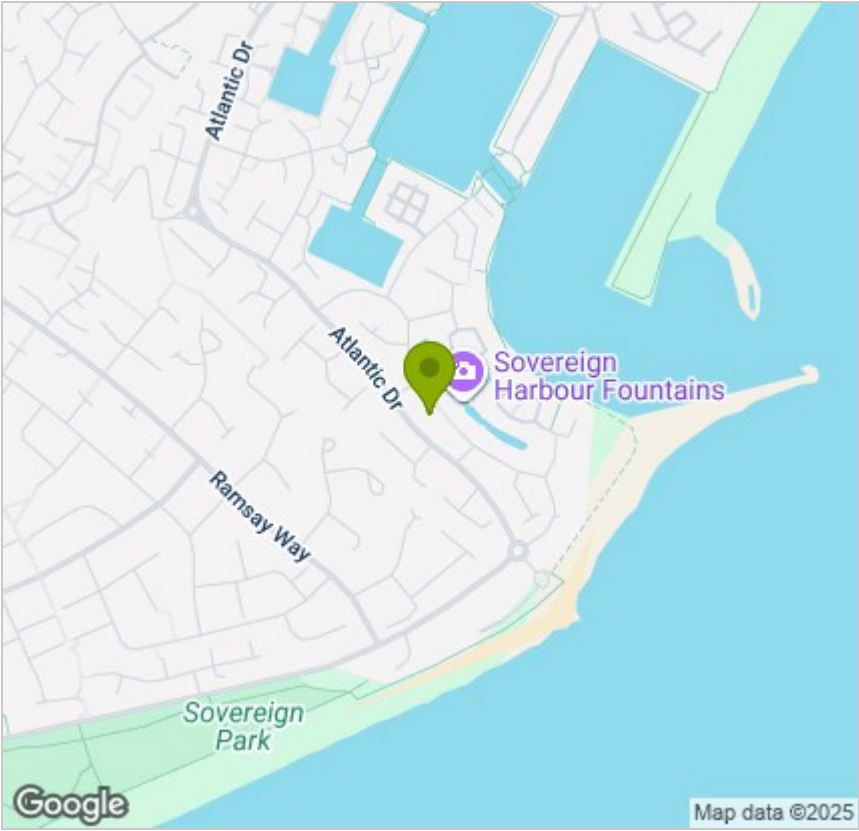


Viewing

Please contact us on 01323 405553
if you wish to arrange a viewing appointment for this property or require further information.

These particulars, whilst believed to be accurate are set out as a general outline only for guidance and do not constitute any part of an offer or contract. Intending purchasers should not rely on them as statements of representation of fact, but must satisfy themselves by inspection or otherwise as to their accuracy. No person in this firms employment has the authority to make or give any representation or warranty in respect of the property.

Area Map



Energy Efficiency Graph

